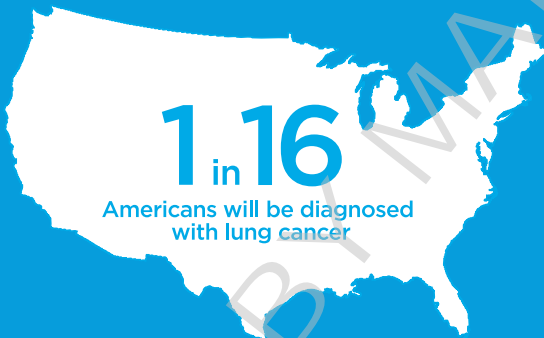


LUNG CANCER FACTS



- Lung cancer can affect anyone, regardless of gender, ethnicity, or smoking history.
- About 60%-65% of all new diagnoses are among people who have never smoked or are former smokers.
- Only 18% of all people diagnosed will survive 5 years or more, but, if it's caught before it spreads, the chance for 5-year survival improves to 56%.
- Lung cancer takes more lives than breast, colorectal, and prostate cancers combined.
- Only about 6% of federal dollars spent on cancer research are spent on lung cancer research.

LUNGEVITY FOUNDATION FACTS

- Exciting LUNGeVity-funded research projects include developing noninvasive tests to help more easily identify early-stage lung cancer.
- LUNGeVity supports the largest national lung cancer grassroots events program.
- LUNGeVity's Lung Cancer Support Community is the largest online lung cancer network, providing users with an extensive message board, the latest lung cancer information, and 24-hour support.
- Support and education services for those affected by lung cancer include Lung Cancer 101, the Lung Cancer HELPLine, the Lung Cancer Navigator App, the Clinical Trial Finder, the LifeLine Support Mentor Program, the Clinical Trial Ambassadors Program, the Survivor and Caregiver Resource Centers, HOPE Summit survivorship conferences, and many active social media communities.

It is time to act.

Visit us at: www.LUNGeVity.org



CHICAGO: 228 S. WABASH AVENUE, SUITE 700, CHICAGO, IL 60604

BETHESDA: 6917 ARLINGTON ROAD, SUITE 352, BETHESDA, MD 20814

PH: 312.407.6100 **F:** 312.464.0737 **W:** LUNGeVity.ORG